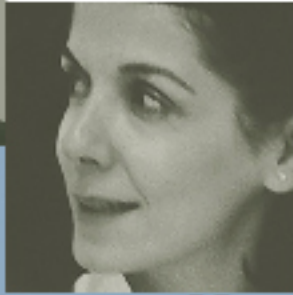


**CONFÉRENCE  
JUSTINE ET YVES SERGENT**



Only dots? Are there lines or lines?  
At what distance do they  
What densities? Close to

**THE JUSTINE AND YVES SERGENT  
CONFERENCE**



**Lauréate 2006**

**MARLENE BEHRMANN, Ph.D.**

Professor, Psychology & Center for the Neural Basis  
of Cognition, Carnegie Mellon University

**Let's face it:  
Psychological and neural  
mechanisms of face processing**

**Vendredi 19 mai 2006 à 12 h**

Centre de recherche  
Institut universitaire de gériatrie de Montréal  
Salle R-0715 (porte 25)  
4565, chemin Queen-Mary  
Montréal (Québec)

**Pour informations : (514) 340-3540, poste 4767**

La communauté scientifique internationale se souvient de Justine et Yves Sergent comme d'un couple indissociable et de Justine Sergent comme d'une théoricienne et une méthodologiste hors pair. Ses travaux sur l'organisation du cerveau pour la cognition commandent encore aujourd'hui respect et admiration.

Try short experiment - cover left eye completely; note, count the right half of the right eye - and off the light and ask her to tell how left visual field appears.

*The international scientific community remembers Justine and Yves Sergent as a devoted and steadfast couple, and Justine Sergent as an unparalleled theoretician and methodologist. Her work on the cognitive organization of the brain commands respect and admiration to this very day.*