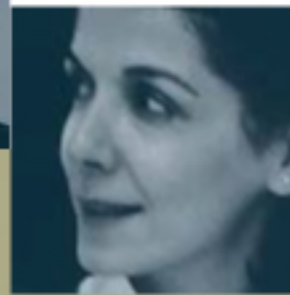


CONFÉRENCE

JUSTINE ET YVES SERGENT



Only dots? Are there lines or lines?  
At what distance do they  
What density? Close to

THE JUSTINE AND YVES SERGENT  
CONFERENCE



Lauréate 2005

MARIE T. BANICH, Ph.D.

Director, Institute of Cognitive Science  
Professor, Dept. of Psychology, University of Colorado

”A dynamic couple:  
The relationship between the  
brain’s two halves helps us pay  
attention”

Vendredi 10 juin 2005 à 12 h

Centre de recherche  
Institut universitaire de gériatrie de Montréal  
Salle R-0715 (porte 25)  
4565, chemin Queen-Mary  
Montréal (Québec)

Pour informations : (514) 340-3540, poste 4767

La communauté scientifique internationale se souvient de Justine et Yves Sergent comme d'un couple indissociable et de Justine Sergent comme d'une théoricienne et une méthodologiste hors pair. Ses travaux sur l'organisation du cerveau pour la cognition commandent encore aujourd'hui respect et admiration.

Try short experiment - cover left eye completely; note, count the right half of the right eye - and off the light and ask her to tell how left visual field appears.

The international scientific community remembers Justine and Yves Sergent as a devoted and steadfast couple, and Justine Sergent as an unparalleled theoretician and methodologist. Her work on the cognitive organization of the brain commands respect and admiration to this very day.